

1920
Kimono bodice
Corsage kimono
by Lhauda

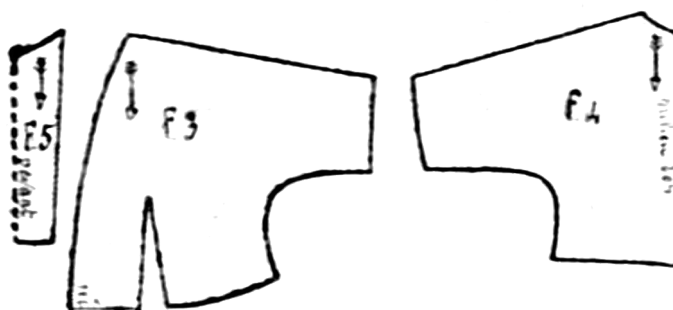
Source : *La mode Illustrée* n° 36, 1920.

Tour de buste : 108 cm
Tour de taille : 77 cm

Fig. 3 Devant

Fig. 4 Dos

Fig. 5 Gilet

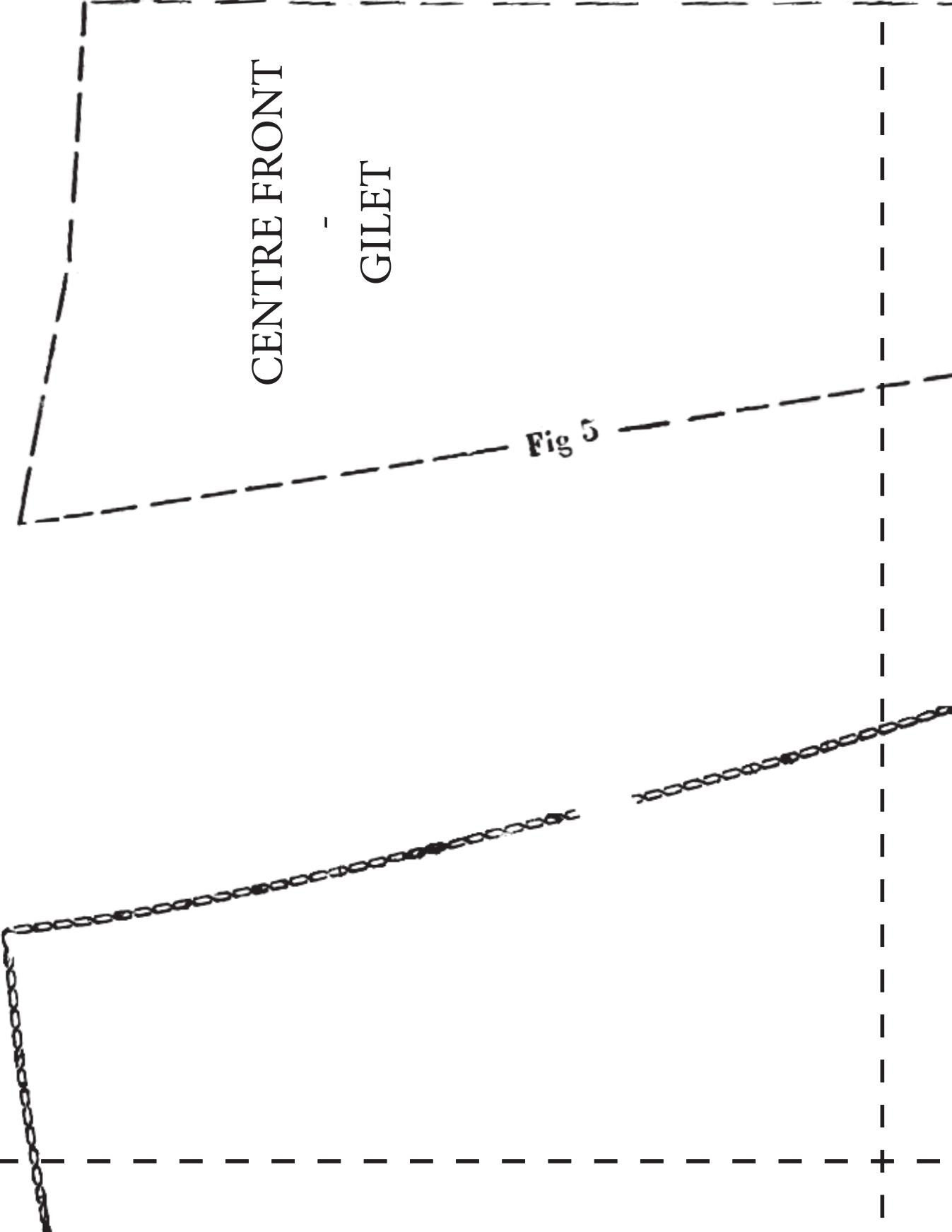


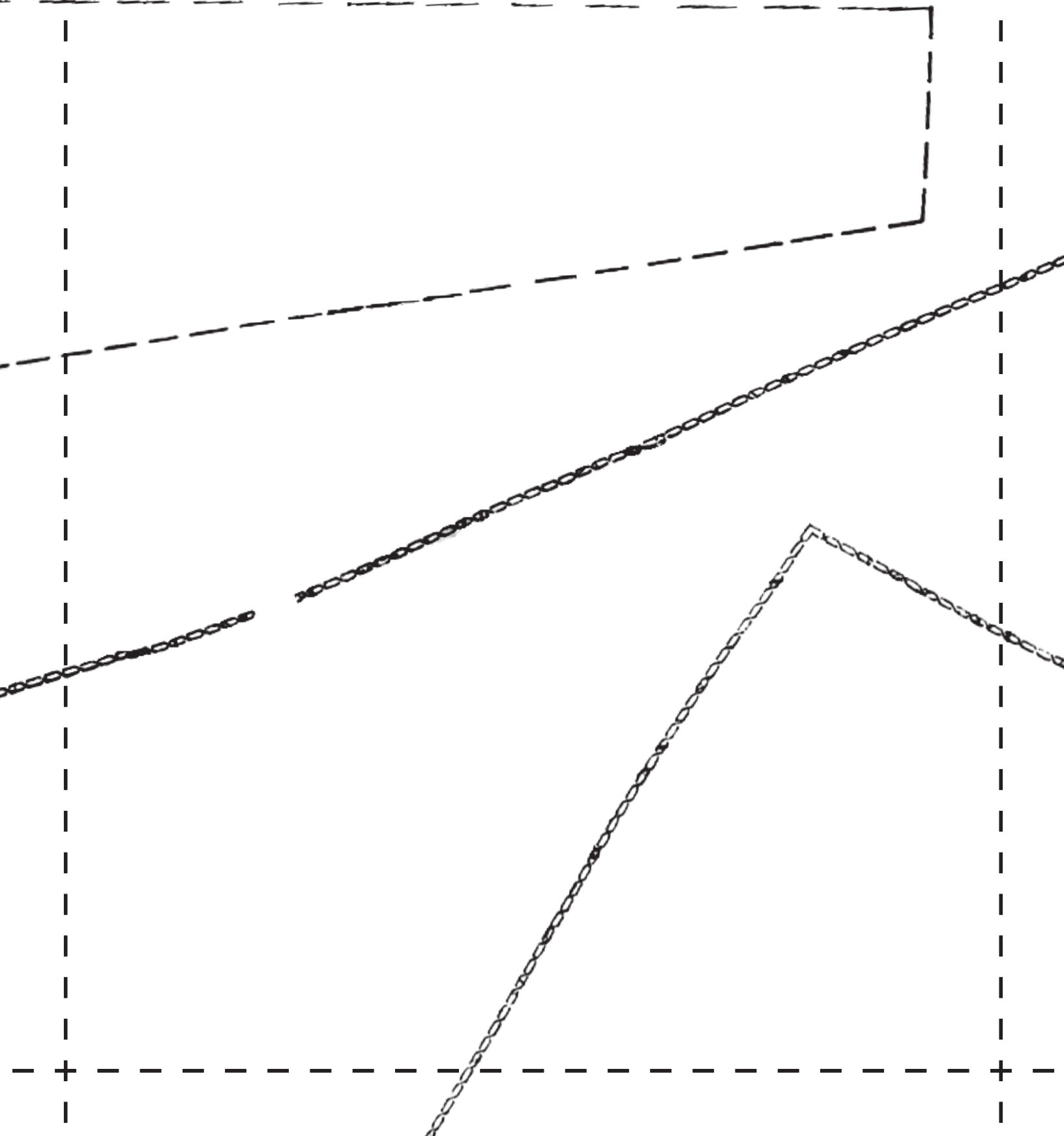
Copy of the original pattern. Print at 100% scale (A4 format).
Copie du patron d'époque. Impression à échelle 100%. (Format A4).

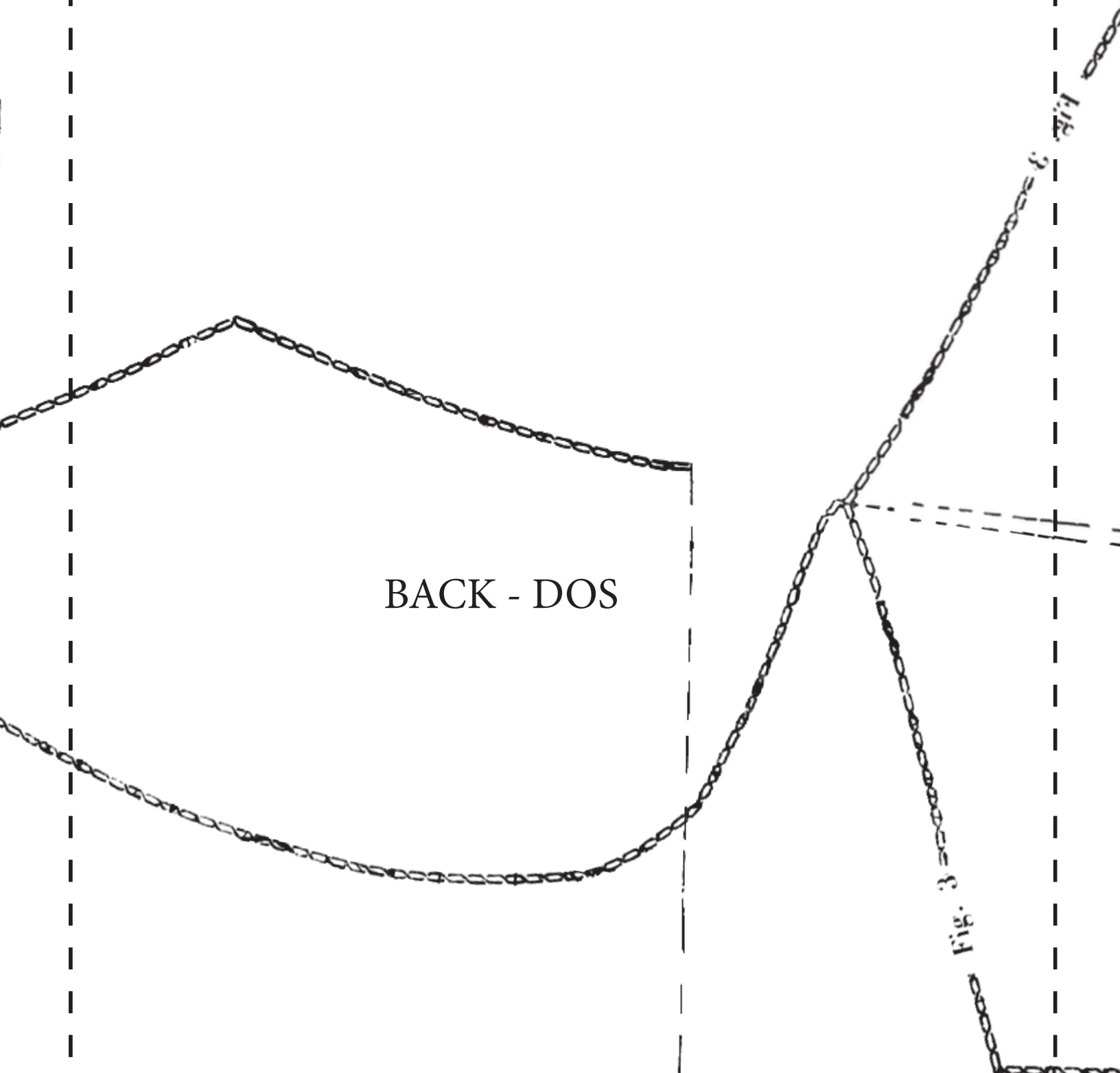
CENTRE FRONT

GILET

Fig 5

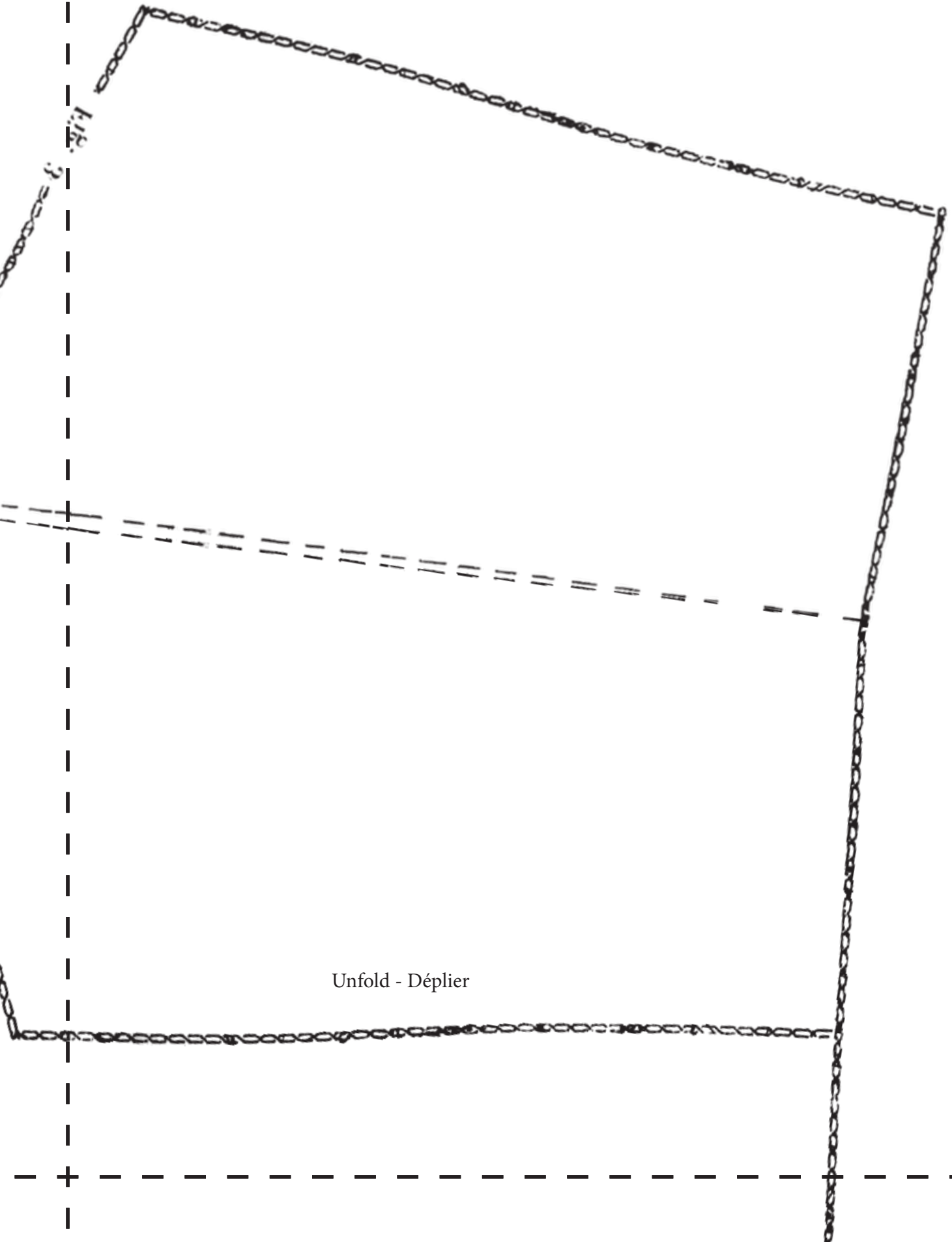




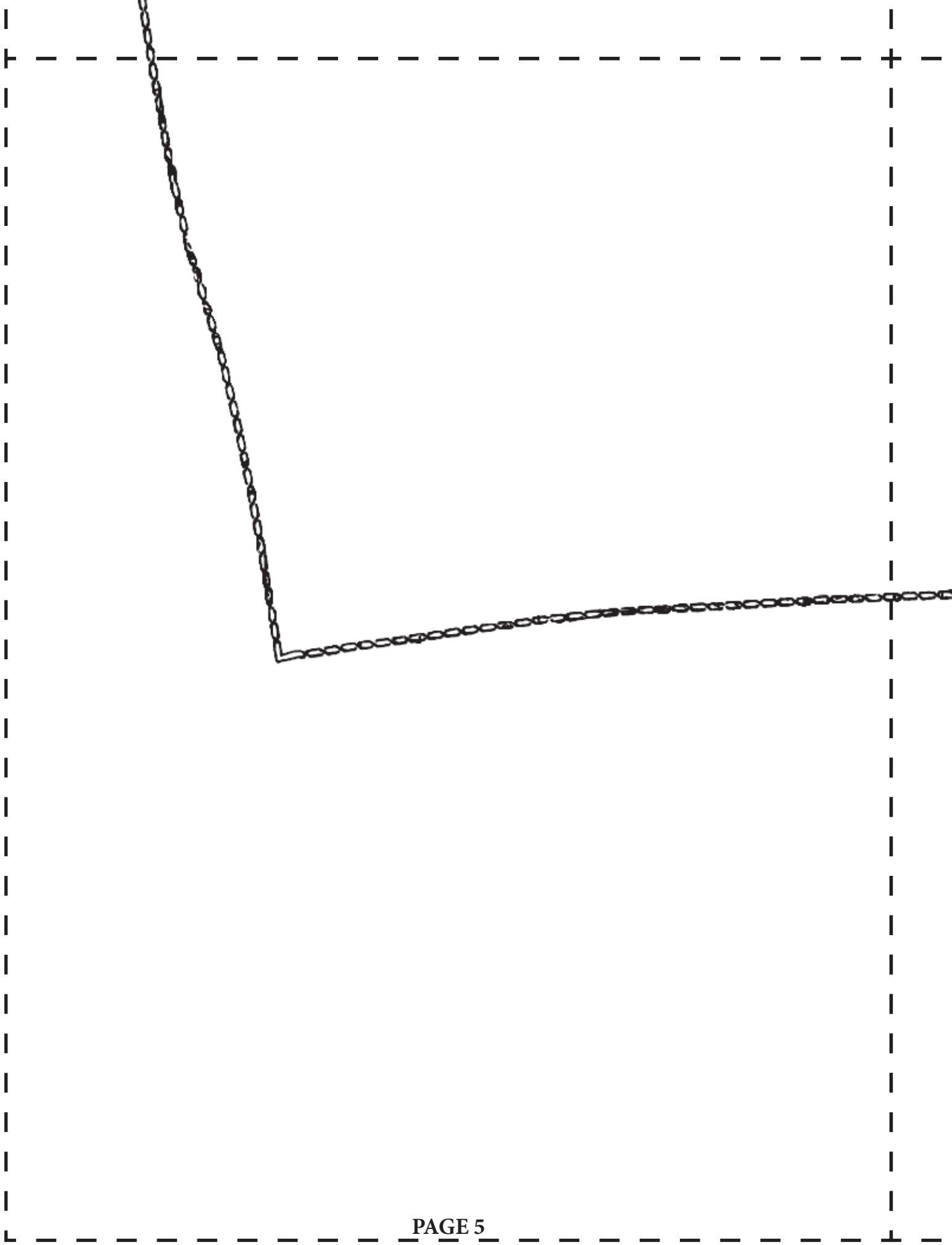


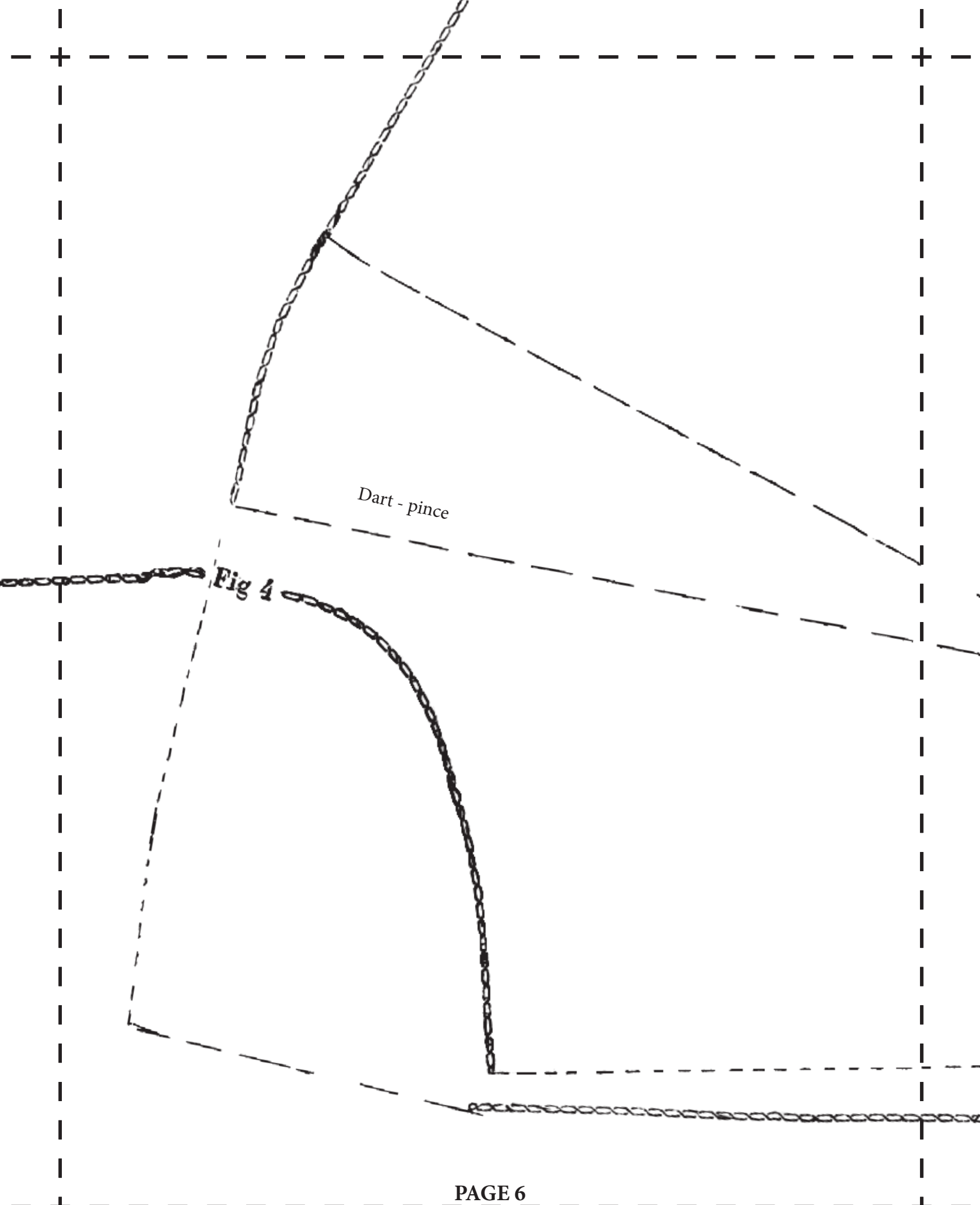
BACK - DOS

Fig. 3



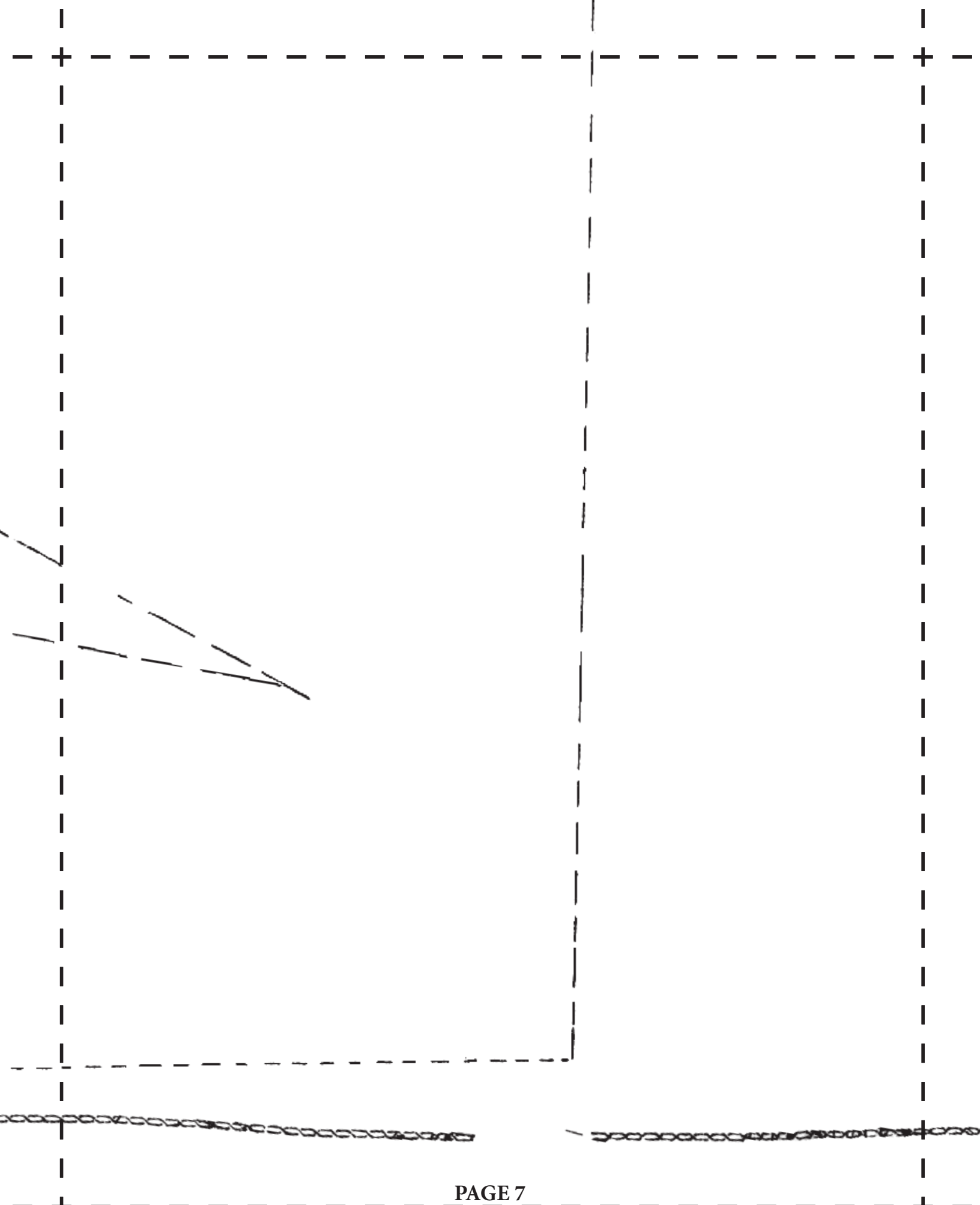
Unfold - Déplier





Dart - pince

Fig 4





FRONT

DEVANT